



QUALITY

Security and reliability of products Fagima

SPECIAL PRODUCTS

Design and manufacture of custom machinery

USED

Range of used machinery, carefully reviewed

PARTNERSHIP

Collaborations Colgar/Fagima

HOME

COMPANY

PRODUCTS

DISTRIBUTORS

IN EVIDENCE

VIDEO

CONTACTS

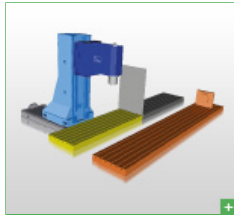
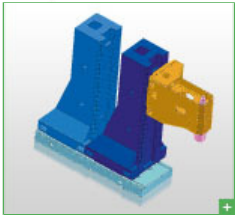
SPIN ARROW

Moving column vertical machining center



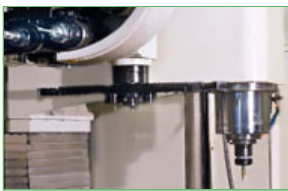
Spin Arrow is a moving column verticam machining center with a very rigid structure that allows for the use of spindale motors up to 30 kW and #50 spindle taper.

The fi x table confi guration allows for the loading of heavy workpieces and to organize the table as a single work zone or a double work zone for pendulum operation.



The **SPIN ARROW** offers: appropriate response to different manufacturing needs. This is a typical requirement/need of nowadays work environments, where it is difficult to predict or trust in the continuity of the work load. Ability to replace the need of a medium/large machine (especially for the machining of long&narrow parts) or to replace two machines (when machining smaller parts in pendular mode).

As a consequence, this type of machine will **GUARANTEE A SHORTER RETURN ON THE INVESTMENT** allowing for the possibility to re-invest in a new machine in a shorter time period.



The spindle

The std spindle is a interchangeable cartridge, belt driver. It is offered either with #40 taper 10,000 rpm as well as #50 taper ,000 or 8,000 rpm. As an alternative, electrospindle cartridges are available for high speed milling needs with 12000-18000-24000 rpm..

Operator panel

It allows for the complete control of all machine functions. The swing arm and the remote control panel give the operator the freedom to follow the work phases from the most convenient position.

Different types of CNC

can be utilized:

- HEIDENHAIN
- FANUC
- SIEMENS
- Z 32 (D. ELETTRON)
- ECS
- SELCA.

Ergonometry

The fi x table will give the operator the comfort of a fi x workpiece which can be easily reached, loaded and unloaded. The arrangement of the table will also allow for easy chip evacuation and proper integration of chip conveyor unit..

Auto tool changer

40 T chain type auto tool changer (option 60). The tool rack is independent from the upright, it moves together with the column allowing for tool change in any X ax position.



TOP 

SPIN ARROW - Caratteristiche tecniche - Technical features

Features		2200	3200	4000	5000	6000
Strokes						
Column longitudinal (X)	mm.	2200	3200	4000	5000	6000
Work zone pendular	mm.	845	1345	1745	2250	2750
Column cross (Y)	mm.	800 (900)				
Head vertical (Z)	mm.	750				
Work table						
Size	mm.	2400x750	3400x750	4200x750	5400x750	6300x750
Max load on table	kG/sqm.	12000				
T slots (size/pitch/number)		18H7/120/6				
Spindle						
Power (S1)	kW.	16 - 30				
Speed	Rpm	6.000 - 8.000 - 10.000 - 12.000				
Tool holder		ISO BT 40, 50 HKS 63, 100				
Auto tool changer						
Number of tools	kG	40 - 60				
Max tool weight	kG	7 (ISO BT 40) - 15 (ISO BT 50)				
Max tool diameter	mm	75 (ISO BT 40) - 150 (ISO BT 50)				
Average tool change time	sec	5				
Feed						
X-Y	m/min.	30				
Z	m/min.	20				
X-Option linear motor	m/min.	100				
Net weight	kG.	14.000	16.500	18.000	20.000	22.000

TOP 